



STATE OF TEXAS CAPITOL COMPLEX PROJECT PHASE II

— ★ — Texas Capitol Complex Update

Progress updates on the Capitol Complex Project | September 4, 2025

Phase II of the Capitol Complex Project Tops Out



Phase II of the Capitol Complex Project looking southwest. All photos in this article are courtesy of the Texas Facilities Commission.

On Friday, August 22, the last steel beam was placed at the highest point on the 1501 Lavaca State Office Building construction. Both the 1500 Congress State Office Building and the Texas Capitol Mall Extension have reached their highest points; therefore, the project is officially topped out. More than four hundred trade workers and members of the project controls, construction management, and design teams gathered on the construction site to celebrate the milestone achievement. Officials in attendance from the Texas Facilities

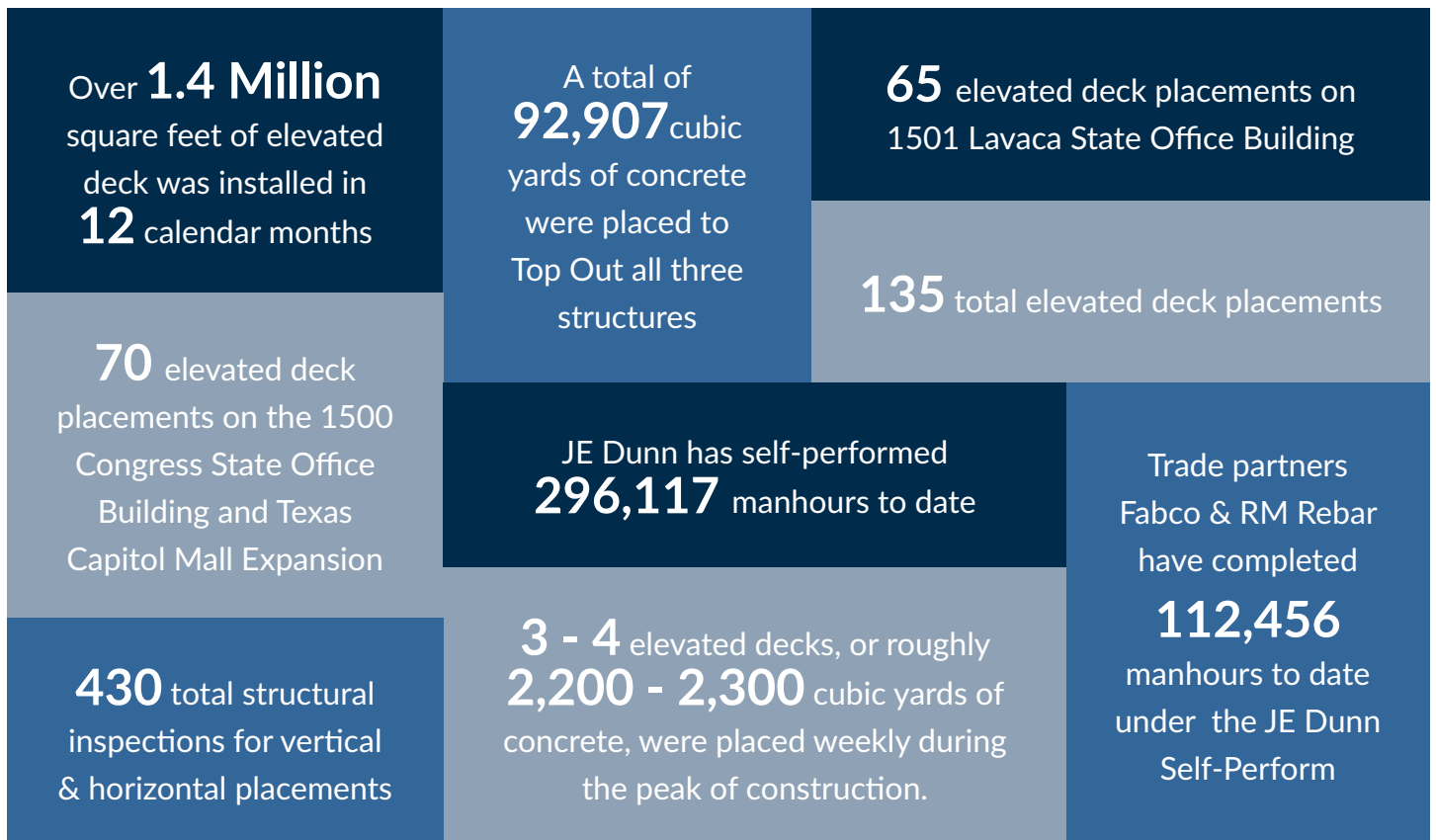
Commission included Executive Director Mike Novak, Facilities Design and Construction Division Deputy Executive Director Will McKerall and Deputy Director Cameron Geertsema, Senior Project Manager Kathryn Panak, and Project Manager Jay Franklin.

The celebration festivities included a catered lunch, final beam signing, and recognition of the workers. Speakers from [JE Dunn](#), the construction manager of the project, included Project Manager Gabe Smith. Gabe led the self-performance team for the concrete installation and cited several impressive project statistics.



Texas Facilities Commission Executive Director Mike Novak addresses the ceremony attendees.

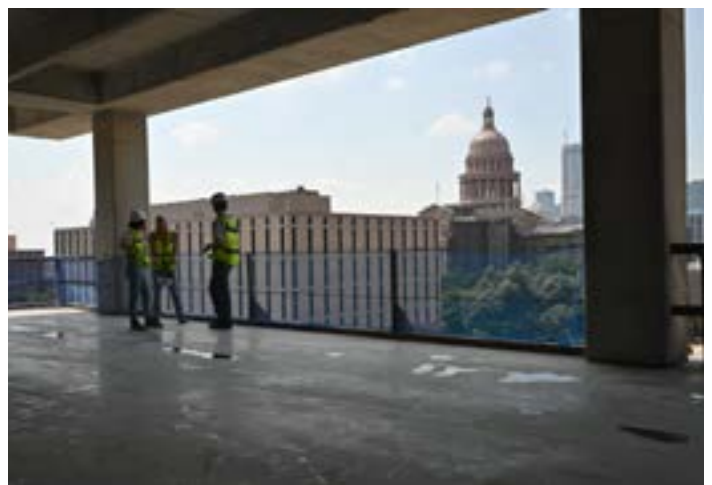
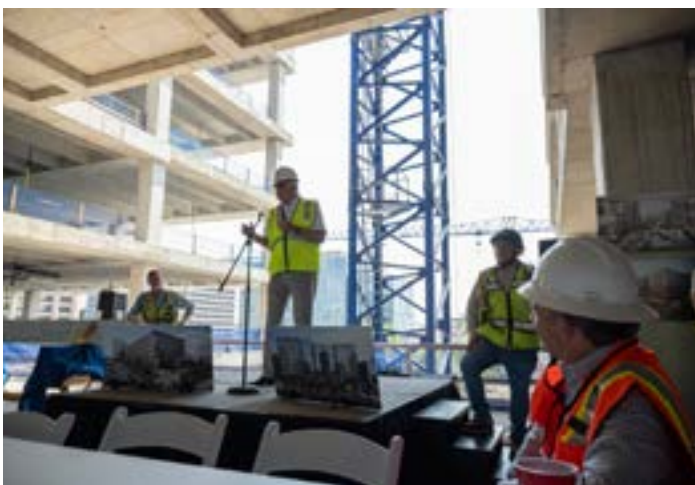
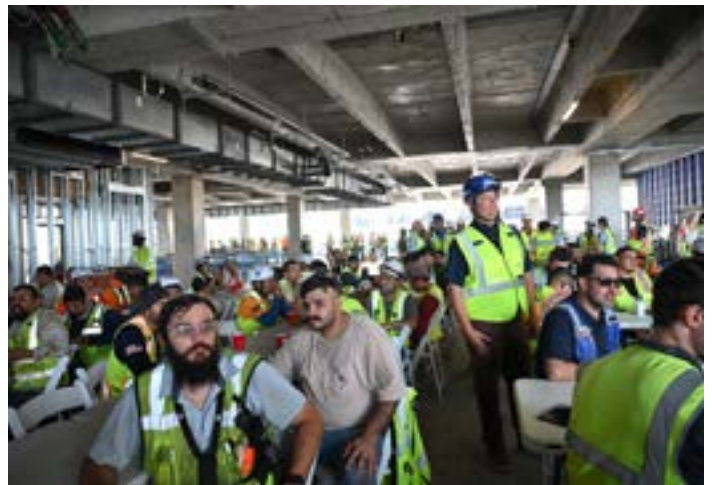
CAPITAL COMPLEX PROJECT PHASE II CONCRETE FACTS



The topping out of Phase II of the Capitol Complex Project marks momentous progress in the State of Texas' goal to provide modern, permanent office space for State operations while reducing expenditures for leased space. Topping out celebrations are a time-honored tradition for construction projects and provide us a moment to pause and recognize the accomplishments of the various vendors and teams involved in the project.

The Texas Facilities Commission would like to thank everyone who attended this celebration and most importantly to all those individuals who have provided countless manhours of planning, design, construction, and support to achieve this project milestone.

Topping Out Photo Gallery



Welcome to 2025 UT Longhorn Football Tailgating



Photo courtesy of Texas Athletics / SIDEARM Sports

UT football is back! Break out your burnt orange and head out to catch a game and do some tailgating. The Texas Facilities Commission is proud to offer UT Football Tailgating on State property near the university campus.

This season, there are seven home games with exciting matchups that will draw fans from all over. As expected, tailgating spots are almost sold out. Visit the TFC tailgating webpage for remaining availability.

For easy access to the stadium, consider taking the UT Park and Ride Shuttle to the game. Park at State Lot 26 (701 W. 51st St.) and get dropped off near the stadium. Shuttle service runs two hours prior to all games and one hour after the game ends. Please see Alternative Parking below for more information.

Please visit our webpage for more details on tailgating policies, tailgating lots, parking, and maps. [Football Gameday Parking on State Property \(texas.gov\)](#)

GAME DAY REMINDERS

State Employee Game Day Parking

State employees are permitted one FREE parking space in either State Garages A, E, F, or J on a first come, first served basis. Capitol Complex State employees with badge access are encouraged to park in State Garages T (Mall Garage) and W (Bush Garage).

- State parking locations not listed above will be closed, barricaded, and not available for any access.
- The 16th Street entrance to State Garage J will be closed in the morning on game days. However, State employees may enter on Guadalupe St.
- State employees are required to show the parking attendant a State of Texas employee ID for a FREE parking permit. DPS parking stickers on vehicles are not sufficient for free entry.

Closed State Garages for UT-issued Parking Permits Only

ALL spaces in **State Garages B, Q, and R** are temporarily leased to the University of Texas for Football Home Games. ALL spaces in these garages must have a UT-issued parking permit. (Vehicles without proper permits will be fined.)

Alternative Parking for Standard, RV, and Oversize Vehicles at the North Austin Complex

Public parking spaces are available for standard, RV, and oversized vehicles at the North Austin Complex, JH Winters Building (Lot 26 - located at 701 W. 51st Street.).

Spaces are first come, first served and can be rented for \$20.00 from 6:00 p.m. the day before a UT football home game to noon the day after the game or \$10.00 per space on Game Day. Parking is paid upon entry, and no reservations are taken. Please note that parking spaces are for standard vehicles, and RVs entering the lot may require the purchase of multiple parking spaces to park.

This location does not have portable toilets, water, or utility hook-ups; however, there are portable toilets located in the park across the street. A round-trip shuttle service runs to and from the stadium, beginning two hours before the game and continuing until one hour after the game ends. The shuttle will drop-off and pick-up at Dean Keaton St. and Robert Deadman Drive.



2025 TEXAS HOME FOOTBALL SCHEDULE

- September 6 - San Jose State 11:00 AM
- September 13 - UTEP 3:15 PM
- September 20 - Sam Houston 7:00 PM
- November 1 - Vanderbilt 11:00 AM
- November 22 - Arkansas TBA
- November 28 - Texas A&M 6:30 PM
- 1 Additional Game - TBD

Photo courtesy of Texas Athletics / SIDEARM Sports



TRAVEL TIP

If you haven't been to the Capitol Complex in awhile, be sure to read the following section

Traffic Updates

Capitol Complex streets will have increased traffic on all home football game days.

- 18th St. from San Jacinto Blvd. to Trinity St. will be closed 2-4 hours prior to kick-off. Vehicles will need to use alternate cross streets (MLK Blvd. and 15th St.) once this circular traffic pattern begins.
- Traffic pattern changes and street closures will be set for one hour after kick-off times.
- Scholz Garten will have a street closure on 17th St. from San Jacinto Blvd. to Trinity St. each gameday. The street will be barricaded and closed until game time. Once the game begins, the street will be reopened for egress traffic.
- Street closures will not directly affect access to State office buildings however, traffic will be heavy and employees should expect delays. The street will be barricaded and closed until game time. Once the game begins, the street will be reopened for egress traffic.



HELPFUL LINKS

[Austin Texas Events Calendar](#)

[CapMetro Closures](#)

[Capitol Complex Parking Map](#)

[Downtown State Parking Map](#)

[Capitol Complex \(Construction\) Project Website](#)

[Gameday Parking Map](#)

[Texas Capitol Events Calendar](#)

Please share and encourage co-workers and friends to sign up for this newsletter at www.TexasCapitolComplex.org.

Visit the project website at
www.TexasCapitolComplex.org

Copyright © 2024
TFC Capitol Complex Project, All rights reserved.